



Streamliner

★ ТРАНС-СИБИРСКИЙ ЭКСПРЕСС ★

A humanist sans-serif typeface by  
Nick Roschkowsky



# Table of Contents

Inspiration	1
About	2
Glyph Design	3
Metrics	5
Typesetting Specimens	6
Glyphs	7
Designer	9



# Inspiration

1



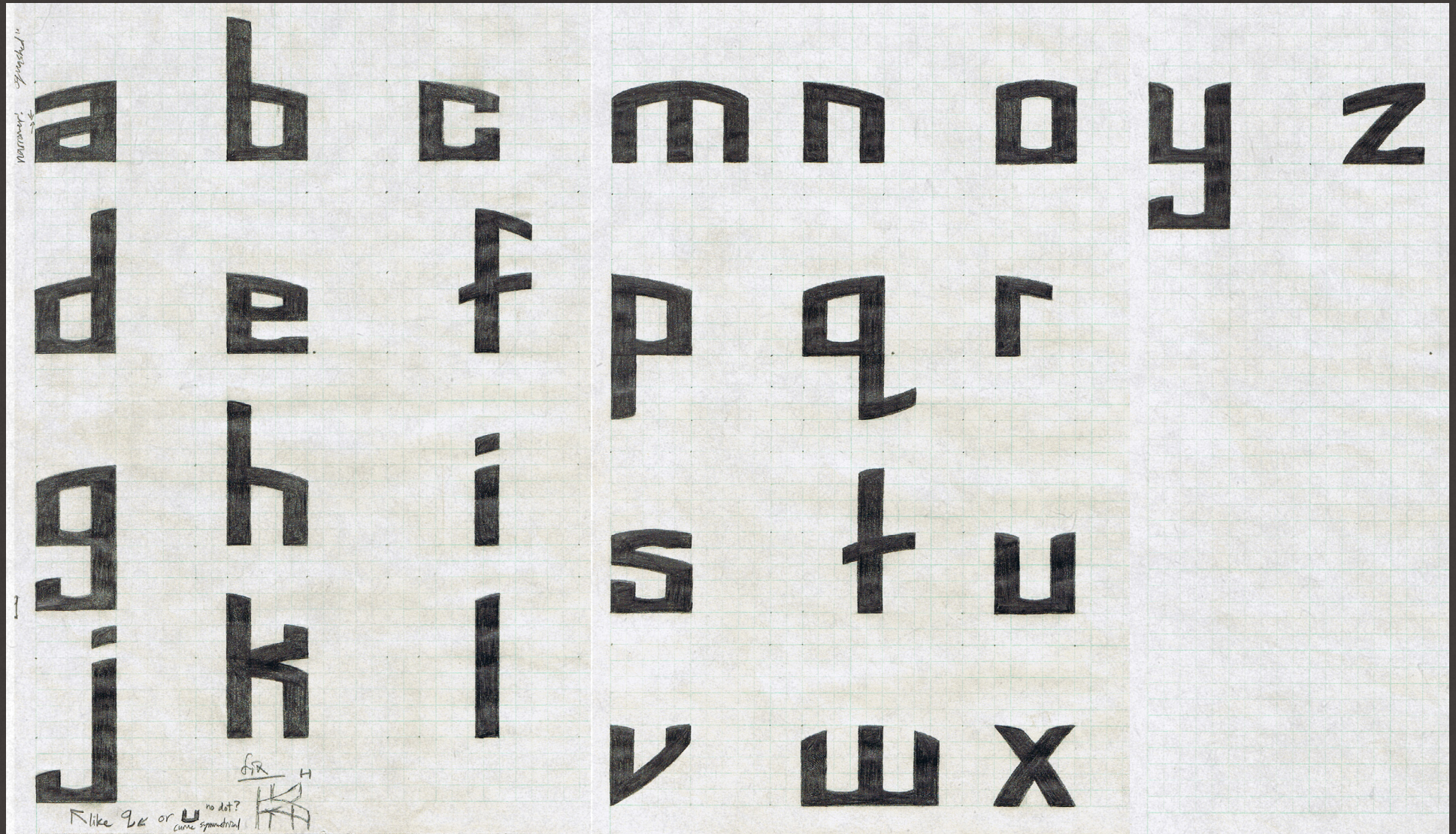


# Streamliner

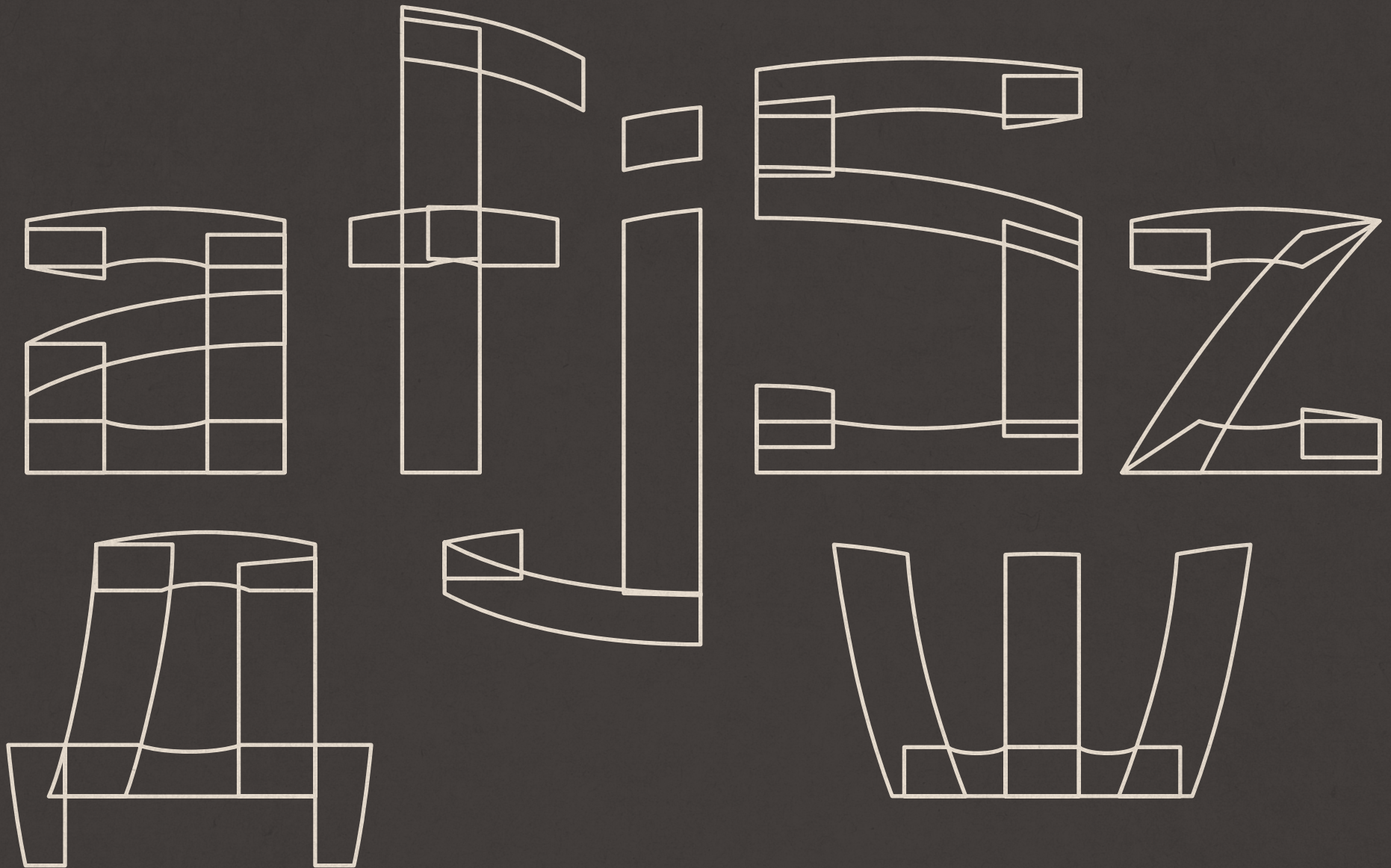
**A stalwart force with an iron will.**

Streamliner is built to weather the harshest conditions. This sans-serif humanist typeface based on the arched and vertical forms of trains, tunnels and bridges. It features strong verticals with curved horizontals and slopes.

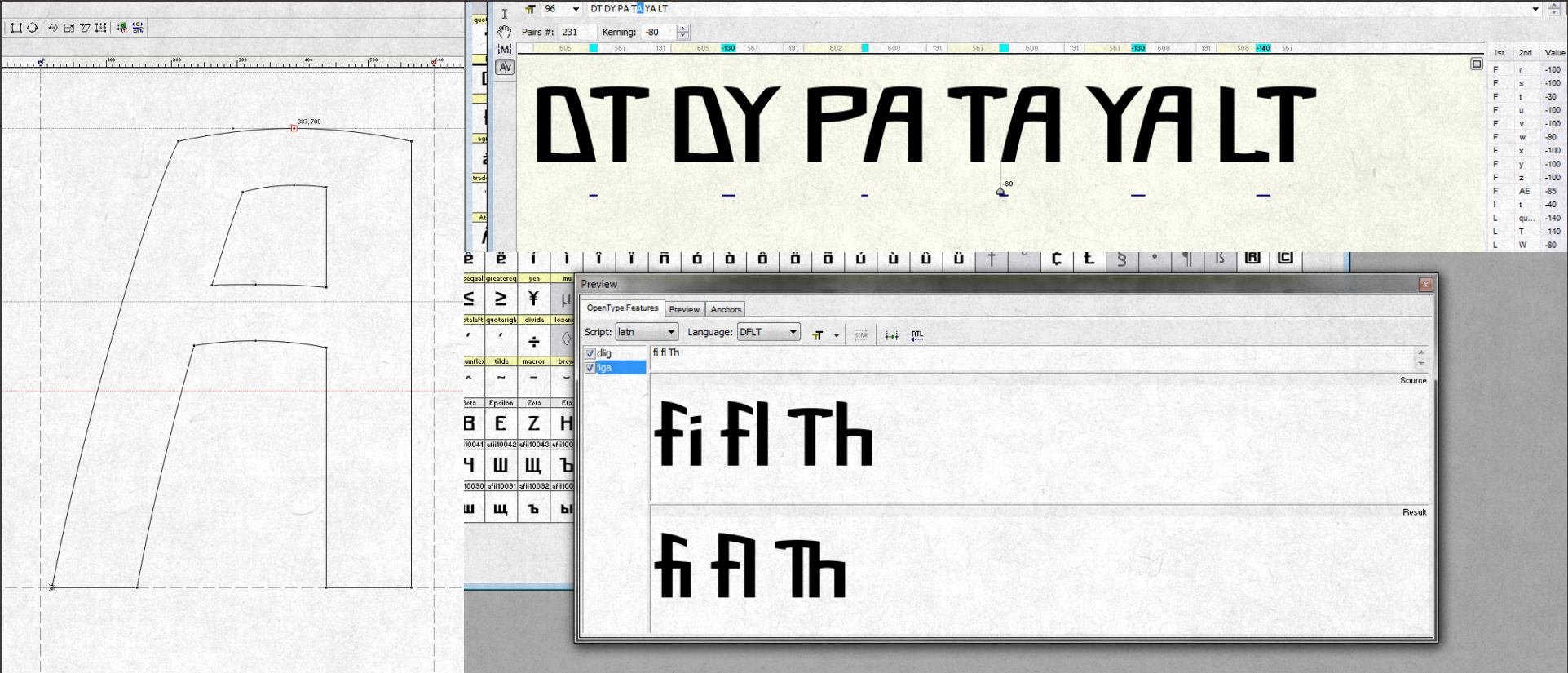














"That was a memorable day to me, for it made great changes in me. But, it is the same with any life. Imagine one selected day struck out of it, and think how different its course would have been. Pause you who read this, and think for a moment of the long chain of iron or gold, of thorns or flowers, that would never have bound you, but for the formation of the first link on one memorable day."

Charles Dickens, "Great Expectations"

"Брожу ли я вдоль улиц шумных,  
Вхожу ль во многолюдный храм,  
Сижу ль меж юношей безумных,  
Я предаюсь моим мечтам.

Я говорю: промчатся годы,  
И сколько здесь ни видно нас,  
Мы все сойдем под вечны своды,  
И чей-нибудь уж близок час."

А.С. Пушкин, "1829"

"ΕΝΝΗΜΑΡ ΜΕΝ ΑΝΑ ΣΤΡΑΤὸΝ ΩΙΧΕΤΟ ΚΗΛΑ ΘΕΟΙΟ  
ΤΗΙ ΔΕΚΑΤΗΙ Δ' ΑΓΟΡΗΝΔΕ ΚΑΛΕΣΣΑΤΟ ΛΑὸΝ ΑΧΙΛΛΕΥΣ"

ὍΜΗΡΟ, "ΙΛΙΪΑΔΑ"

Locomotive  
Railway  
Station  
Shipyard  
Metro

Mechanism  
Assembly  
Operator  
Signal  
Commuter



A B C D E F G H I J K L M N O P Q R S T U V W X Y Z

a b c d e f g h i j k l m n o p q r s t u v w x y z

1 2 3 4 5 6 7 8 9 0 ! ? @ # \$ % & \* ( ) [ \ ]

А Б В Г Д Е Ё Ж З И Й К Л М Н О П Р С Т У Ф Х Ц Ч Ш Щ Ъ Ы Ь Э Ю Я

а б в г д е ё ж з и й к л м н о п р с т у ф х ц ч ш щ ъ ы ь э ю я

Α Β Γ Δ Ε Ζ Η Θ Ι Κ Λ Μ Ν Ξ Ο Π Ρ Σ Τ Υ Φ Χ Ψ Ω









[nick@nick-r.com](mailto:nick@nick-r.com)  
[www.nick-r.com](http://www.nick-r.com)